

# TOOLBOX TIMES

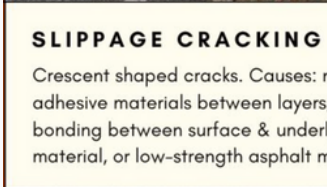
Keeping up with Joe  
Gallagher Asphalt Edition

## Why is your Road Cracking?



### EDGE CRACKING

Longitudinal cracks located near pavement edges. Causes: settling of underlying material, soil drying or lack of lateral support.



### SLIPPAGE CRACKING

Crescent shaped cracks. Causes: non-adhesive materials between layers, poor bonding between surface & underlying material, or low-strength asphalt mix.



### REFLECTION CRACKING

Occurs when an overlay of asphalt pavement is placed over an existing cracked or jointed pavement structure that shifts.



### Why?

Why is your road cracking? Well, it could be one of the many reasons on these pictures!

Or, could it be a combination?

Either way... know the "WHY" to better prepare for the "HOW."

Credit: Pavement Management Services

### How?

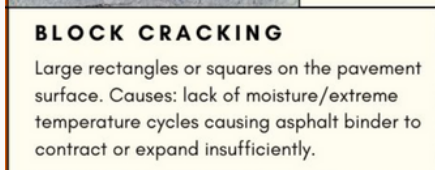
So, I know "why" my road is cracking... but HOW do I fix it?

Well, friendly reader, that's where us recycling experts come in! Hot In-Place can fix some of these roads, while some roads need an alternative method. No matter the solution, we'll guide you in the right direction!



### FATIGUE / CROCODILE CRACKING

Alligator skin appearance. Causes: load-related and can be caused by a weak base, subgrade, or surface, as well as poor drainage.



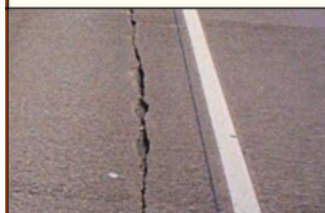
### BLOCK CRACKING

Large rectangles or squares on the pavement surface. Causes: lack of moisture/extreme temperature cycles causing asphalt binder to contract or expand insufficiently.



### LONGITUDINAL CRACKING

Cracks that run parallel to the centerline. Causes: shrinkage of the asphalt, poor joint construction, or improper paver operation.



## NEW WEBSITE

Many of you have heard about our new website. Many of you have, more than likely, gotten some email from ME about the website...

Even so, PLEASE check it out below! Send it to colleagues, explore the new features, and ping us with any questions!

# HIR Website

# St. Patrick's Day Word Search

A	S	B	H	E	T	G	J	H	K	H	L
D	H	C	A	F	R	A	I	N	B	O	W
C	A	S	T	L	E	R	P	G	N	R	M
S	M	T	P	U	A	Q	W	O	V	S	Y
E	R	D	O	C	S	B	A	L	A	E	Z
B	O	O	T	S	U	S	H	D	U	S	T
F	C	G	Q	N	R	P	A	Z	V	H	A
J	K	H	M	B	E	A	R	D	Y	O	B
L	I	C	O	I	N	T	P	X	Q	E	I

- HAT
- GOLD
- BOOTS
- SHAMROCK
- POT
- COIN
- CASTLE
- HORSESHOE
- HARP
- BEARD
- RAINBOW
- TREASURE



## Trivia

**Q: When date is the Ides of March?**

**A: Email Joe for Answer**

**Q: Where is the Troi-Rivieres Bridge?**

**A: Email Joe for Answer**

**Q: What Mythology figures are Atropos, Lachesis, and Clotho?**

**A: Email Joe For Answer**

## On this date...

On this date in 1779 the US Army Corp of Engineers was founded

On this date in 1892 the first PUBLIC basketball game was played.

On this date in 1918 the first NHL Playoffs / Championship Games were played!

## Joe's Corner

**Overall Record: 4-5**

**NCAA Tournament Champions:**  
Houston (+650)

**The Players Tournament Champion (PGA Tour Golf):**  
Shane Lowry (+3500)  
Luck of the Irish!!

**Quote of the Month**  
"Et tu, Brute?"  
**Julius Caesar**



# Industry Spotlight - Rachel Lang

## Direct Line

(630) 631-2854



## Email

rachel@cammidwest.com

## Who is Rachel the Business Lady?

- Rachel is Ms. APWA!!
  - Past APWA Chicago Metro Chapter Prez
  - Chapter Community Outreach Chair
  - Fox Valley Branch Membership Chair
  - APWA, WI Chapter, YP Committee Member
- BESIDES ALL OF THAT - Rachel is a Pavement Preservation Specialist who covers IL & WI for Corrective Asphalt Materials (CAM)
- Don't let your road fall apart - Call Rachel!!

## What is Rachel the Person?

- Rachel lives in Hinckley, IL. Is married to Tom, mother to Graham & Dean, and Super-Aunt to Karter.
- Rachel is an avid runner, gardener, golf enthusiast, and, fun fact, former rugby star!
- Her colleagues have called her:
  - A bad singer
  - An outfit A-lister
  - A great friend
  - A strong relationship builder and great leader